



105 Holmes Road, Eastham Free-Standing Warehouse with Yard

Description:

- ◇ Building 4,800 sq. ft. warehouse (80' x 68')
- ◇ Warehouse: 3,400 sq. ft. with 3 overhead doors
- ◇ Office Space: 1,400 sq. ft.
- ◇ Yard: 10,000 sq. ft. (+/-) paved lot plus parking area in front of building

Features:

- ◇ 14'5" to eaves
- ◇ Lot may be locked at night
- ◇ Excellent parking
- ◇ Gas / electric
- ◇ 2 containers to stay on site

Hard to find warehouse , located less than 1/4 mile off the Mid-Cape highway, Route in Eastham. The property is convenient to Provincetown, Orleans, Truro, and all points west.

Ideal location for contractors, wholesaling and deliveries.

Located in aquafer protection overlay, in Trade Park Zoning.

ASKING \$6,000 per month NNN

Exclusively Listed by Kevin Wentworth - AMG Realty

Bus: 508.362.3323

Cell: 508.737.8961 kpwentworth@verizon.net

The information contained herein is believed to be accurate, and has been derived from sources deemed reliable. The providers of this package expressly disclaim any and all liability, express or implied for any information, representations, projections, contained herein, or for any omissions from the document, including, but not limited to all other forms of documentation that may be communicated to any party during the course of evaluating this transaction.

105 Holmes Road, Eastham



**Top –front of the building.
Bottom– gate at entrance to lot.**



Exclusively Listed by AMG- AMG Realty

Bus: 508.362.3323 ~ Cell: 774-836-0347

aamaloney@comcast.net

www.AMGRealty.net

105 Holmes Road, Eastham



105 Holmes Road, Eastham



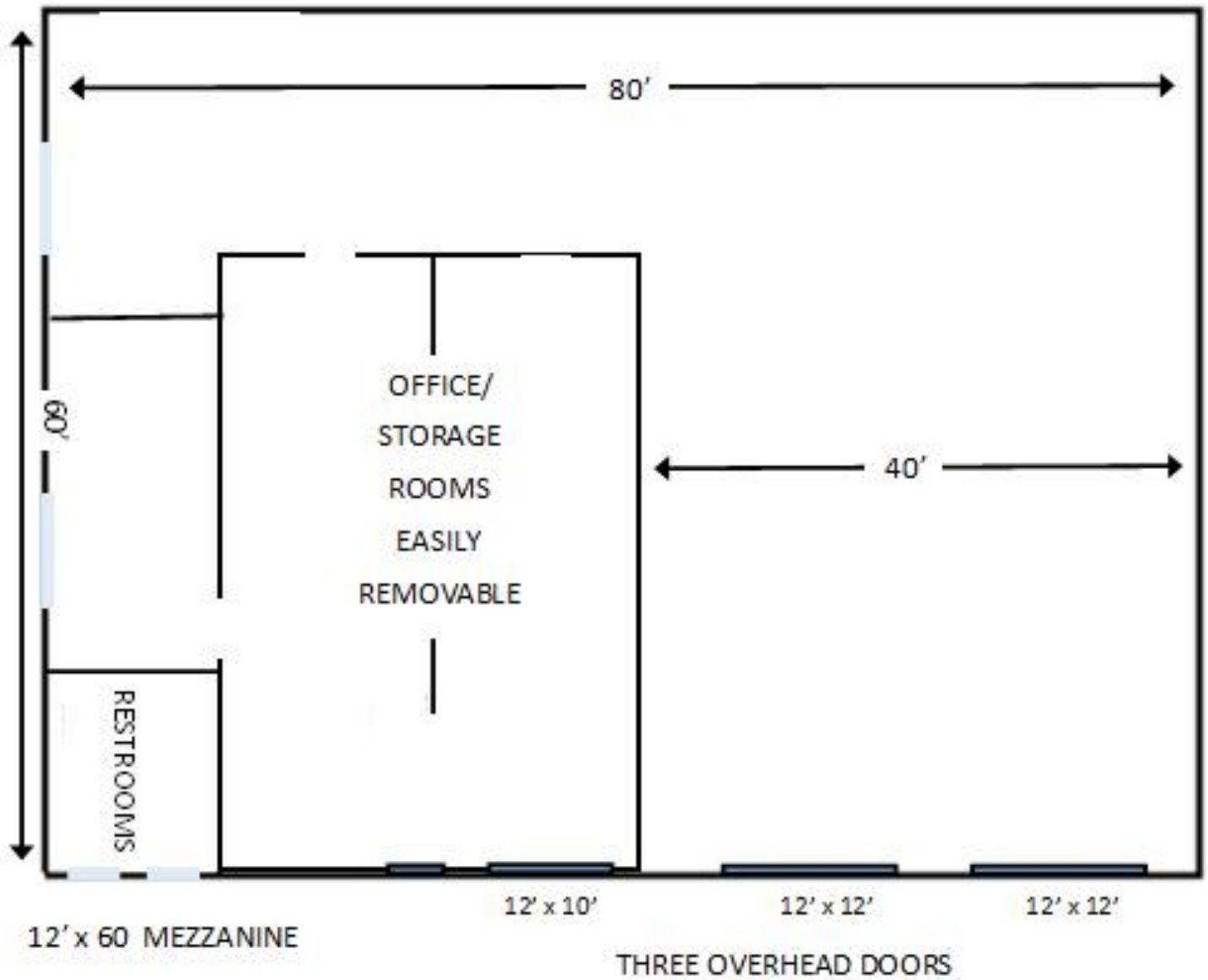
Second floor mezzanine space

AMG

105 HOLMES ROAD EASTHAM

4,800 Square Foot Warehouse

Footprint 80' x 60'



Measurements are approximate. Not to scale.

Exclusively Listed by Ali Maloney- AMG Realty