



Downtown Onset Commercial Space

211-(C-D) Onset Avenue, Onset, Wareham

First floor space formerly occupied by Kinlin Grover Compass; adjacent to SKM Title and Closing. Space features two private offices and a large open work space. There is wood-like flooring throughout. The bathrooms are in the common areas. Space measures 800 sq. ft. Cute storefront with lots of foot traffic. Space is within walking distance to the Onset Beach, Onset Pier and the Gazebo, with public parking, Onset Beach Patio and Grille, Quahog Republic and the Bandshell. Signage available. Tenant is responsible for cost of utilities.

Minimum 3-Year Lease

FOR LEASE— \$2,000 per month

Exclusively Listed by Ali Maloney- AMG Realty

Bus: 508.362.3323

Cell: 774.836.0347

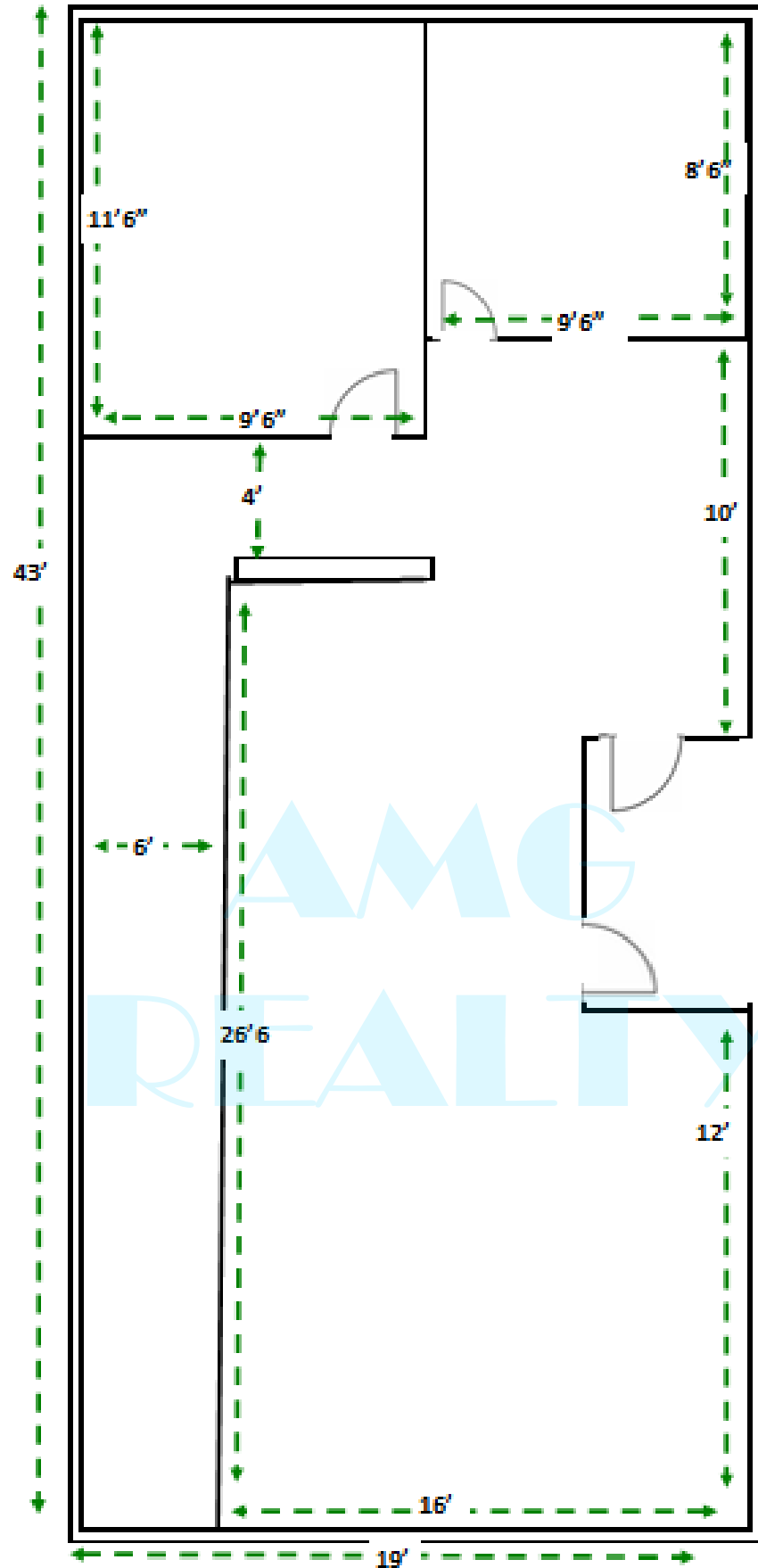
aamaloney@comcast.net

The information contained herein is believed to be accurate, and has been derived from sources deemed reliable. The providers of this package expressly disclaim any and all liability, express or implied for any information, representations, projections, contained herein, or for any omissions from the document, including, but not limited to all other forms of documentation that may be communicated to any party during the course of evaluating this transaction.

211-(C-D) Onset Ave, Onset

Measurements are
Approximate

Not to scale



Exclusively Listed by
AMG Realty
508.362.3323



211 (C-D) Onset Avenue, Onset, Wareham



AMG

This space has large windows overlooking Onset Avenue



AMG



Exclusively Listed by AMG Realty 508.362.3323

www.AMGRealty.net

211 (C-D) Onset Avenue, Onset, Wareham



Above- Property is in Onset Village, within walking distance to the pier & gazebo.



Above- Downtown Onset and 211 Onset Ave, left.

